



# Post-Closure Use of Capped Landfills – Opportunities and Limitations

Bruce Haskell, P.E.  
Camp Dresser & McKee Inc.

October 26, 2006

# Purpose

Provide an overview of how other communities have:

- Used their capped landfill sites
- Developed a site specific plan for landfill reuse



# ***Successful post-closure use projects***

- **Involve the public**
- **Ensure public health and safety**
- **Identify costs and funding sources**
- **Plan for reuse – before capping**
- **Design an innovative closure**
- **Control environmental impacts**
- **Obtain approvals and permits**



# Reuse alternatives commonly evaluated include



- Nature and habitat area
- Park and sports field
- Golf driving ranges
- Golf course
- Commercial Development



# Nationwide reuse examples also include

- Ski or sledding slopes
- Sculpture or botanical garden
- Public works or other municipal facilities
- Amphitheater
- Cemetery



# City of Cambridge – Danehy Park

- ◆ 50 acres
- ◆ Completed in 1990











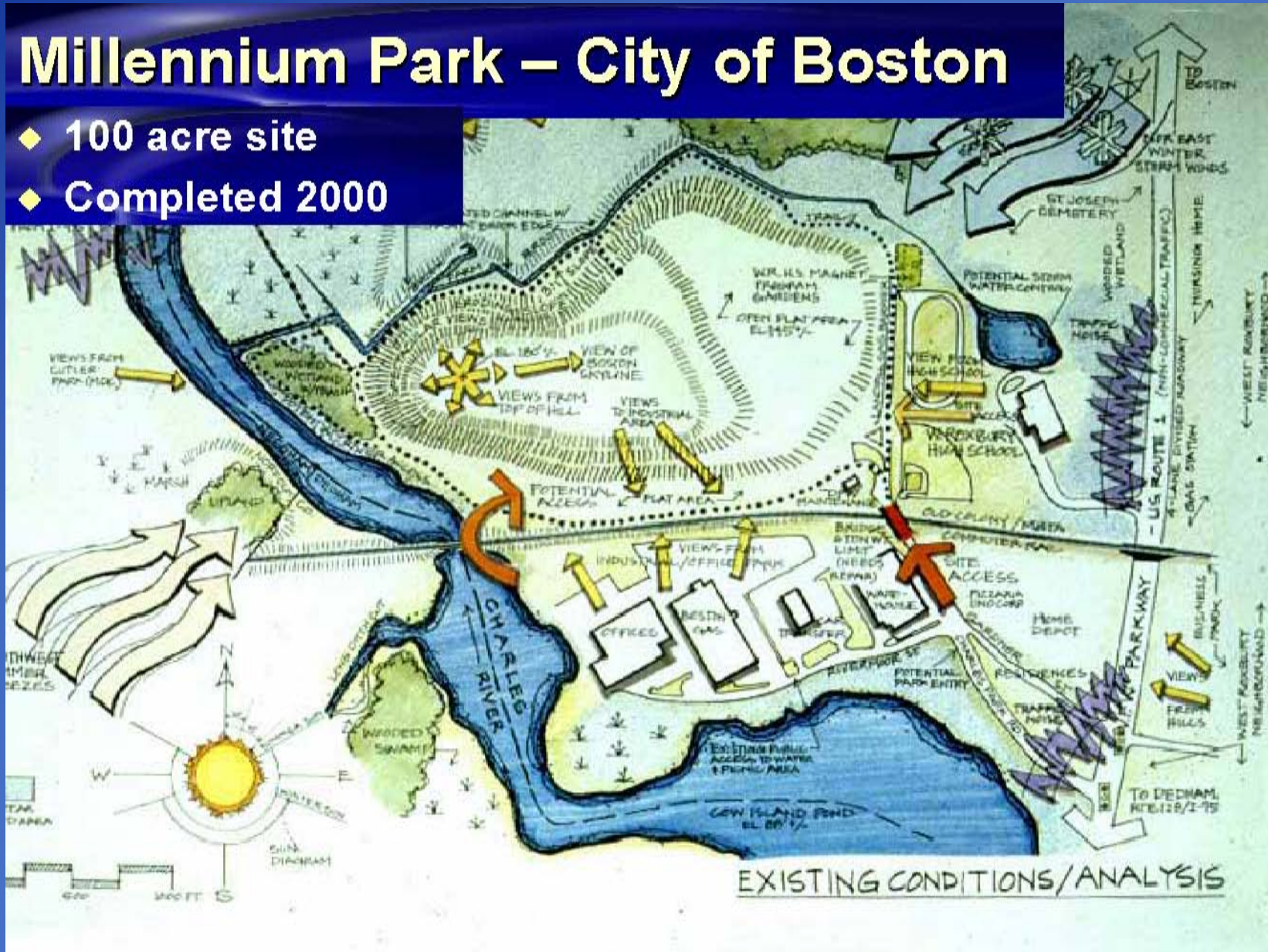






# Millennium Park – City of Boston

- ◆ 100 acre site
- ◆ Completed 2000













# Park and Passive Open Space Spectacle Island, Boston Opened Spring 2006



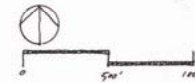
# Spectacle Island

- Old Boston dump, horse rendering plant and hospital
- Received urban fill as part of CA/T project
- CA/T project agreed to cap landfill and construct park

## Boston Harbor Islands A National Park Area

### SPECTACLE ISLAND 105 Acres

— Island Not Open for Regular Public Access



Intertidal Zone

North Drumlin

Seawall

Paths

Granite Pilings

Beach

South Drumlin

Visitor Center  
(to be constructed 2002)

Pier

Promenade

Beach





# Park, Open Space and Habitat Restoration Staten Island, New York Construction starts spring 2007





# 9-Hole Golf Course Expansion and Park Town of Yarmouth

- ◆ 100+ acre site including 60+ acre landfill
- ◆ Completed 1999









# Pope John Paul II Park Metropolitan District Commission

- ◆ 62 acre site
- ◆ Completed 2001





# Walker's Brook Crossing Commercial Development – Town of Reading

- ◆ 30 acre site
- ◆ Projected completion 2004











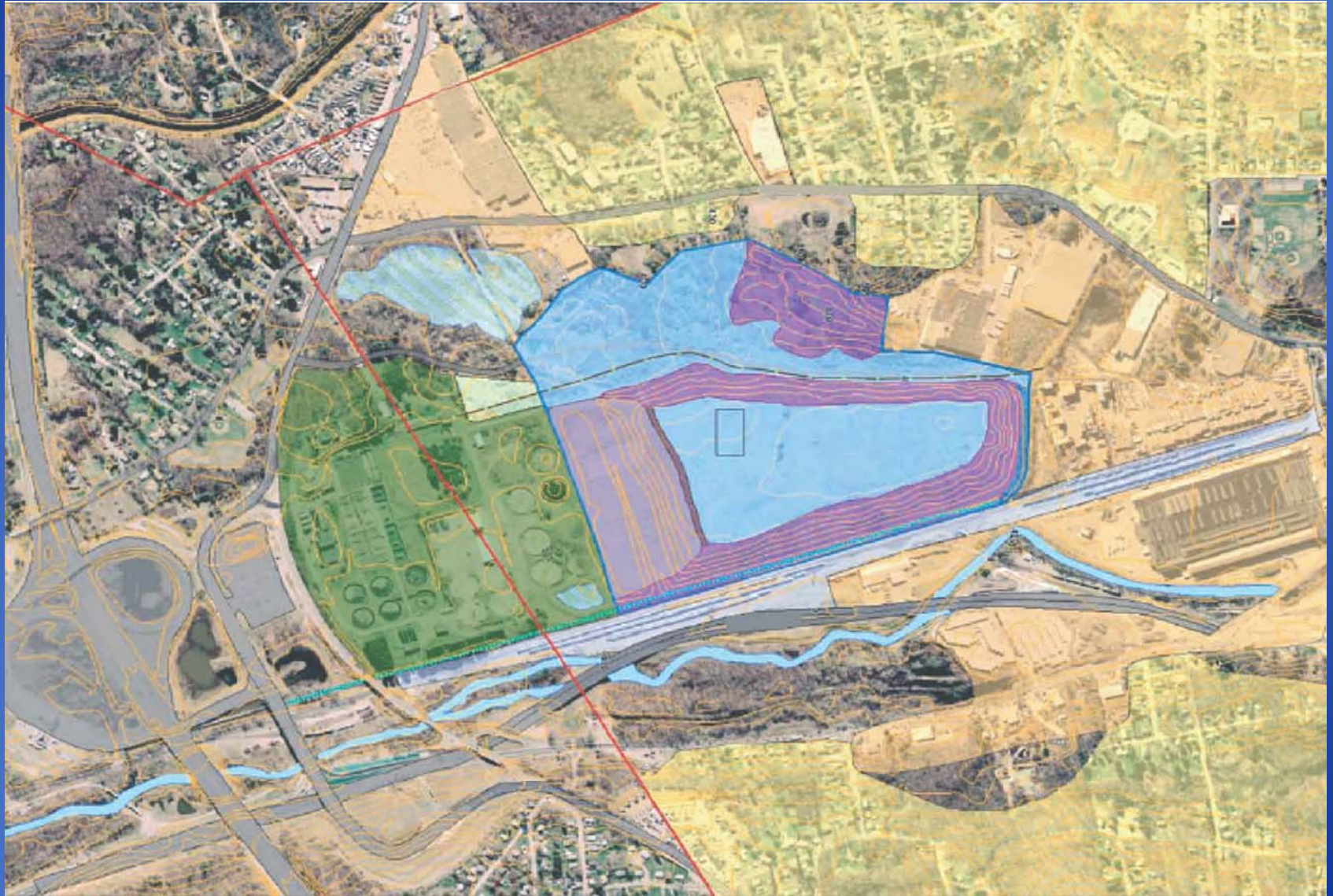




# Starting the Public Process

- Provide information on potential opportunities
- Develop an existing conditions analysis
  - Site constraints
  - Access
  - Views
  - Site topography
  - Environmental issues
- Take a chance – develop some alternatives
- Always consider cost and funding sources

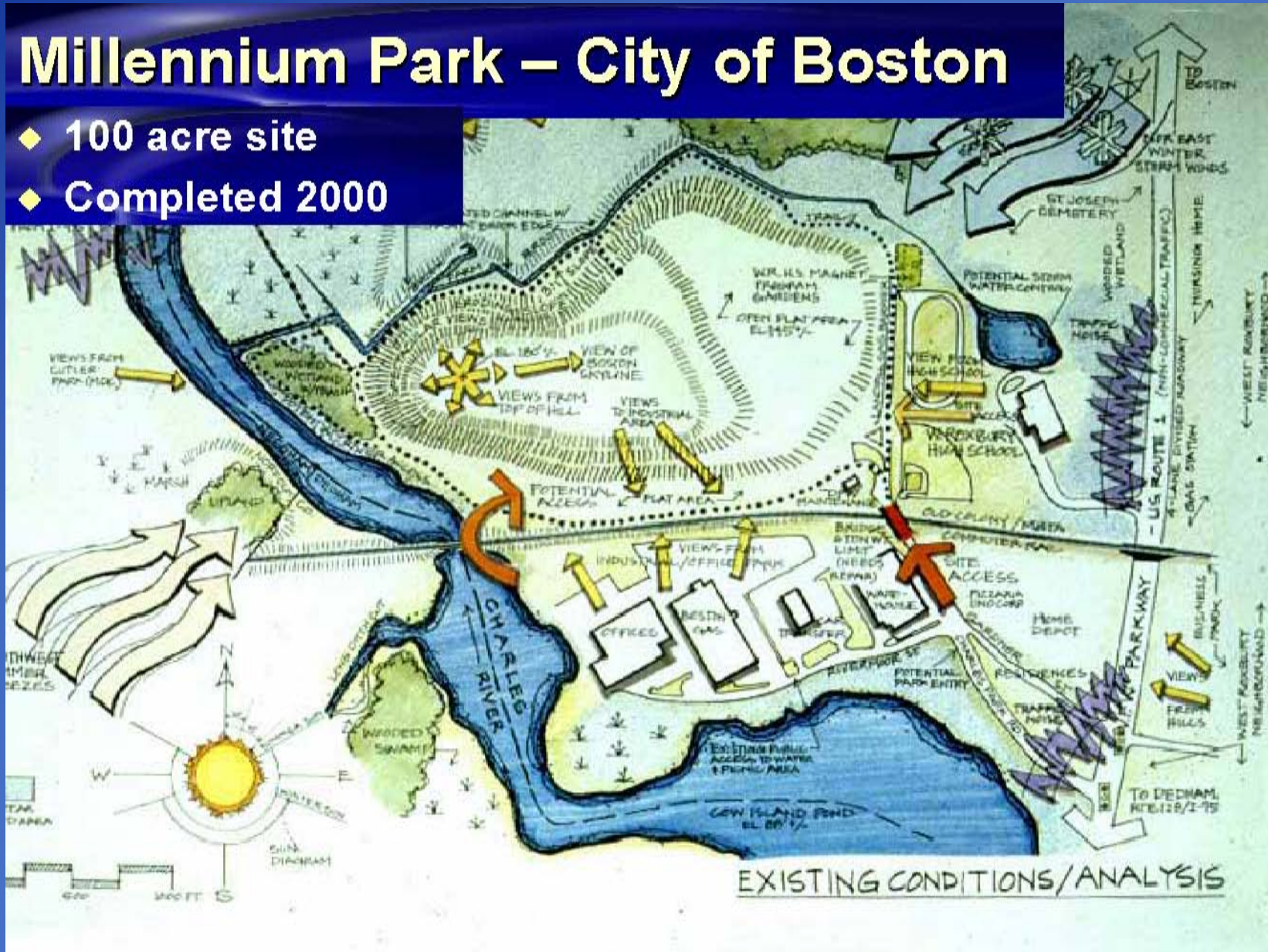
# Starting point – Existing conditions analysis





# Millennium Park – City of Boston

- ◆ 100 acre site
- ◆ Completed 2000

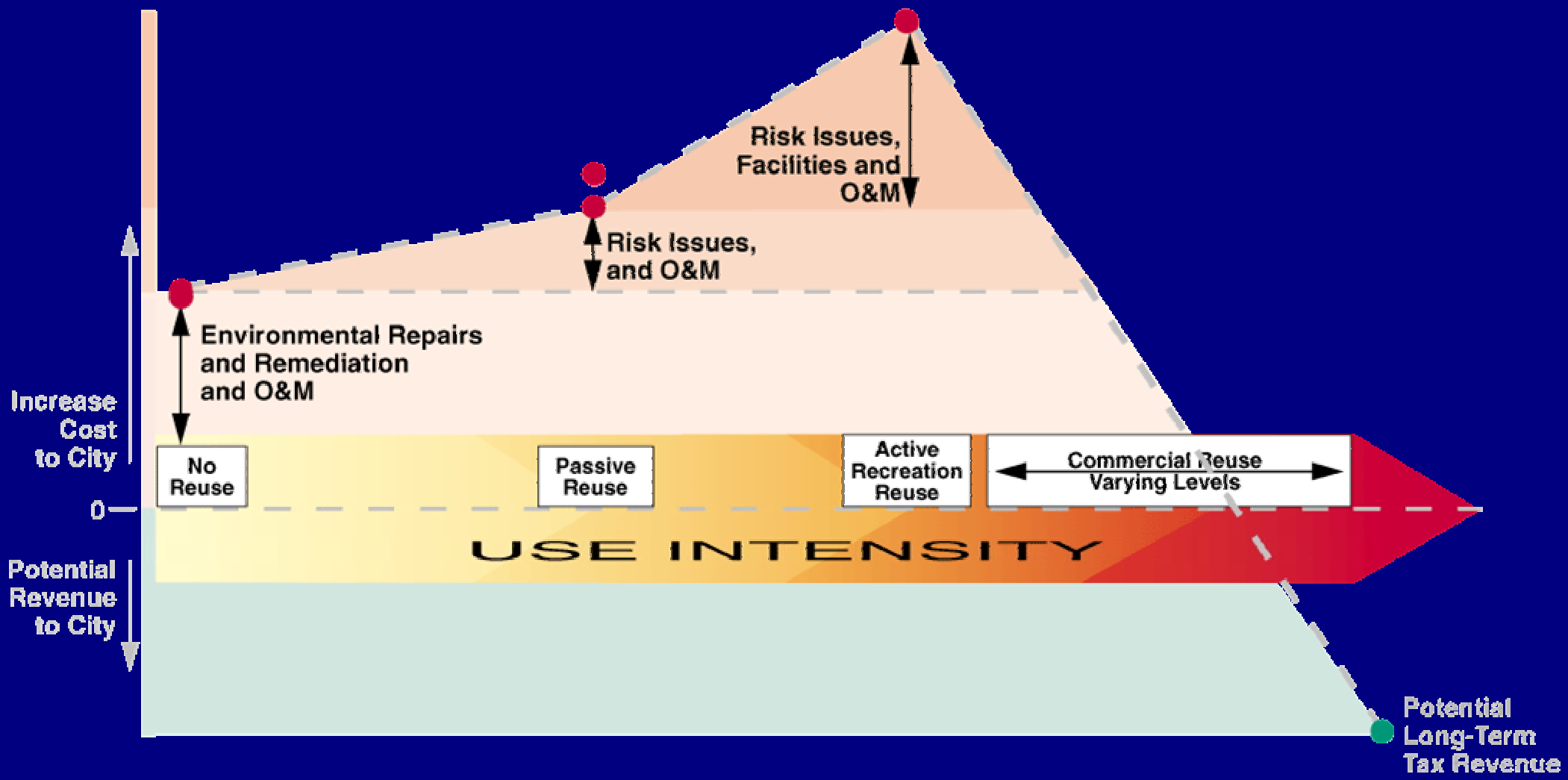




# Develop conceptual alternatives







# CDM

---

## Questions and Answers